

Energy Cte March 16 2022

Zoom: 5:00pm, Paul CZ, Paul FH, Laurie H, Denis C, Robert M, Dan S, Jen C

Cool Refrigerant Recovery Pilot

Recycle Yard Structure has 200 amp service

They have a propane heater used Wed & Sat only

Procure

- Shed: \$7000?
- Bench with lockable drawers/ cabinet

Proposal

- Need why what, how can be later after pilot
- Sponsoring organizations
 - lead Energy Committee
 - partners NY4CoolRefrigerant Management, Bard College, CAC
- stakeholders/ partners - TJ on board
- Budget
- Don't get into details of rollout

Currently have at least 40 units w/ refrigerants awaiting pump out

Who are the recovery agencies who might take out refrigerants and how would that work?

- Paul FH [research doc](#)

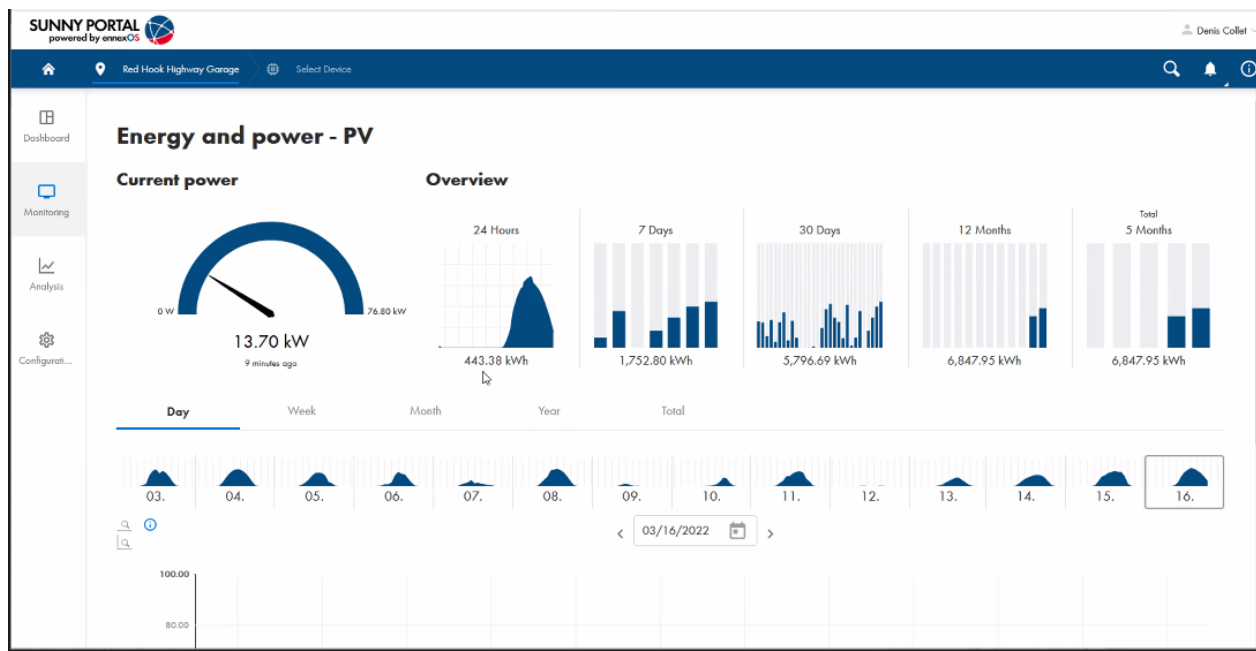
How do we roll out?

- Propose removing refrigerants from existing stock before doing collection drive (continue to accept real time)
- Have enough tanks for special refrigerants that we can get \$ for, Mixed tank for trashed ones
- Town pays \$4.50/pound for impure refrigerants

Bard's [story map](#) w/ our recent drive. Photo album: <https://photos.app.goo.gl/nWuB9RHYt19AftBr7>

Highway Garage

Production screen shot of portal:



Garage is heated by propane thru radiant floor heating in main building

Can we use our excess solar electric generation for electric heating with an air to water heat pump unit?

Would their generator support the additional load in an outage? We don't propose replacing the propane generator

Proposed: No more fossil fuel hookups for heating in all new construction

And no replacements after x years -

What do we need to build this case for the public?

A cost benefit analysis paulcz@bard.edu average sized home, electric rate at RH CDG \$0.066

Other related issues: gas decorative fireplaces, backup gas generators, propane cooking stoves

Paul CZ departs 6:15pm after accepting his hw assignment

Solar Mapping, Solar Zoning revisit?

Language about 3 phase line locating

Stretch Energy Code review [Daniel Smith](#) to check it out for whether we would need to do the ban on gas hookups

Anaerobic Digestion

Visit Tusten's unit this spring? Denis to email his contact - two hour drive

Fast Charger for Town

Resolution next TB mtg?

Meeting close 6:25 pm